



PT. MACINDO RISKI MAKMUR

Workshop Machining : Jl KH Mahmud Maksum No 81

Kelurahan Bahagia Kec Babelan Kab Bekasi

Bekasi Utara, Ph : 021 89238288 – Fax : 021 89238288

Workshop Fabrikasi : Jl Raya Tanjung Pura - Kedung Gede RT001/RW001

Kedung Waringin Kab Bekasi

Web site : www.macindoriskimakmur.com

email : macindo_rm@yahoo.co.id– sales.macindo@gmail.com



SCOPE OF BUSINESS :

- ✓ Machining Services Job Order & Project
- ✓ Steel Fabrication Services
- ✓ Building Maintenance Services : Civil, Exterior & Interior
- ✓ Metal Casting Service

COMPANY OVERVIEW

PT. MACINDO RISKI MAKMUR is the company which is have mainly business for supply anything related with concerning expecially in Manufacturing, Engineering and it support, mainly for job Fabrication & Machining.

Learning from experiences, we got the principles of human resources asset in with there motivation, reliability, creativity and quality that has made PT. MACINDO RISKI MAKMUR a productive and efficient company.

Giving the right solution to the customers need and problem is one of commitments in running our business.

That's why we keep developing ourselves through innovation in technology and human resources management, so we can service our customer more than their expectation to reach Customers Satisfaction.

LETTER OFFICE : Jl KH Mahmud Maksum No 81,
Kelurahan Bahagia, Kec Babelan, Kab Bekasi

T/F : 021 – 89238288, email : macindo_rm@yahoo.co.id
sales.macindo@gmail.com

Contact Person : Ali Ramdhan (Mr), HP : 0815 6070901

VISION

To be the best partner with our customers through improving product and mastering production process

MISSION

To be an trusted advisor company for give outstanding manufacturing industrial parts components and services supplier in Indonesia

MOTTO

Our Motto is 4 S :

SPEED

SNIFE

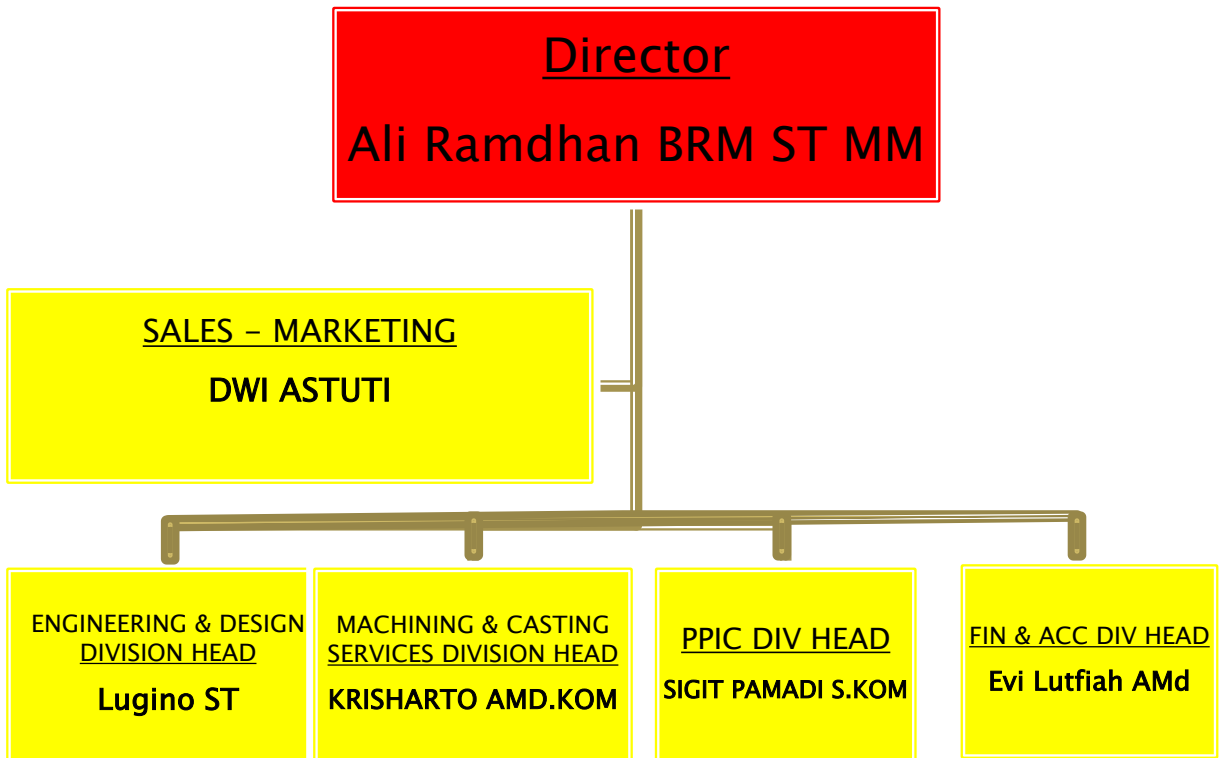
STRENGTH

SATISFACTION

COMPANY LEGALITY DATA

- Akte Pendirian Perusahaan No : 8 Tanggal 22 Desember 2010
Notaris : Jhon Edy Rahman SH MKn (Kota Bekasi)
- Akte Perubahan Perusahaan No : 49 Tanggal 29 Agustus 2019
Notaris : Novita Bumbunan Siagian Ssos SH Mkn (Kota Bekasi)
- Surat Keterangan Domisili No : 503/528 – Kc.Bu
- NIB : 9120202902105
- TDP : 102615107559
- Nomor Surat Pengukuhan Pengusaha Kena Pajak :
PEM – 00288 / WPJ.22 / KP.0103 / 2011
- NPWP : 31.261.671.7–407.000
Atas Nama : PT Machindo Riski Makmur
Alamat : Telaga Mas Blok K No. 12 B RT 001 / RW 013
Harapan Baru Bekasi Utara
- IUJK NO : 1–990764–3275–2–00111/OSS.20
- SBU NO : 0 – 3275 – 06 153 – 1 – 10 – 990764
- BANK :
Bank Mandiri, Nomor Rekening :15600445546779
Cabang Prima Orchard Kota Bekasi
Atas Nama : PT Macindo Riski Makmur

ORGANIZATION STRUCTURE CHART PT. MACINDO RISKI MAKMUR



OUR SCOPE & SERVICES

Fabrication

We Served our customer with Concept Development : Engineering, Project Management Manufacturing : Machineries, Control Panel, Steel Structure Procurement: Special Equipments or Components.

We can made fabrication product as requirement customer need and request as example :

- ❑ Minimarket Displaying Properties : Rack, Hook, Stacking Basket , Frame Display, Rack Display
- ❑ Water Tank
- ❑ Collection Tank Silo
- ❑ High Voltage Electricity Part
- ❑ Bridge Component for Suspension Bridge Truss, Truss Bridge etc

MACHINING SERVICES

JOB ORDER PARTS MANUFACTURING

- ❑ Insert Pin – Gear – Bushing _ Joint Tip
- ❑ Bolt & Nuts – Shaft – Disc Coupling _ Cam Shaft
- ❑ Screw – Roller – Casing Wearing _ Pipa Spray
- ❑ Crank Shaft – Anchor – Plunger Tip _ etc

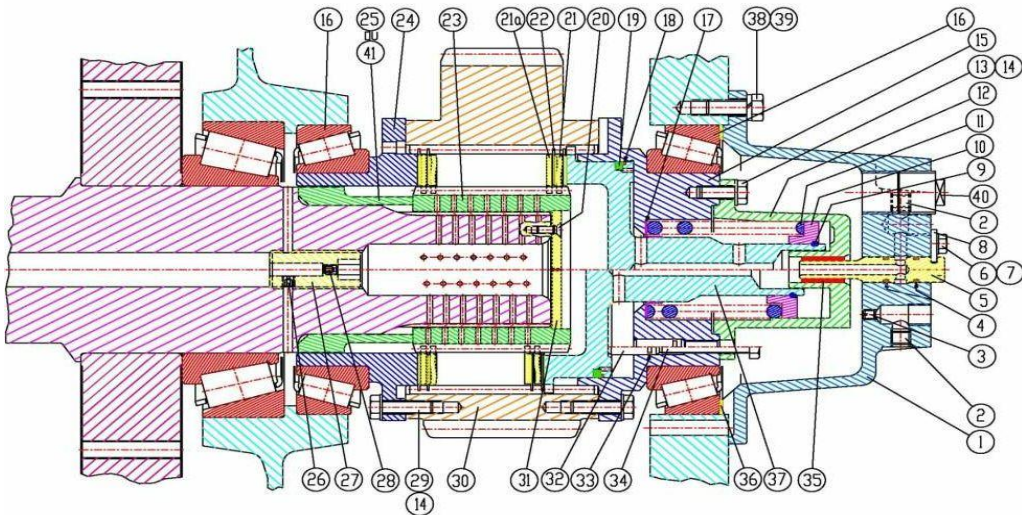
METAL CASTING SERVICES

- ❑ CASTING PRODUCTS with customize order and mass productions
- ❑ Sand Casting & Investment Casting for Ferrous & Non Ferrous material such as : Stainless Steel Product (SUS 304, SUS 310, SUS 630, SUS 431) : Impeller, Propeller, Bronze (AB2 / Alumunium Bronze, LG2 / Leaded Bronze), Brass, etc
- ❑ Ni-hard , Manganese Steel, etc

MAINTENANCE BUILDING SERVICES

- ❑ We Served company which is need for maintenance building for exterior & interior, such as : Partition Room, Lobby Room, Receptionist Room, Paving block installation for parking, painting services, Civil Work others etc

FACILITIES



CNC MILLING MACHINE
Table Size 1000mm X 500mm
MV 106A - YCM

FACILITY



FACILITIES



MILLING MACHINE STANDARD SM5

Table Size 1270mm X 254mm

Travel 780 X 410 X 450



WEST LAKE
Bench Drilling



LATHE MACHINE

WORKING TABLE : Dia 8" X 1100



Band Saw

Work Cutting ~ Dia 8" x 305



Inverter Welding



MIG Welding / CO2 Welding

FACILITIES



CUTTING WHEEL



HAND GRINDING



Magnetic Drill



Gas Cutting



CALIPER 0-150mm

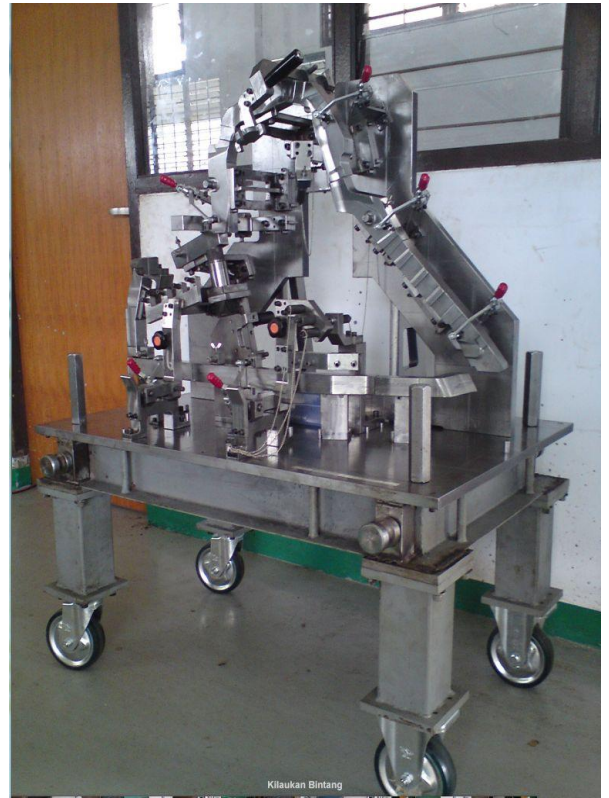


CALIPER 0- 300mm



DIGITAL CALIPER 0-150mm

SAMPLE OF PRODUCT

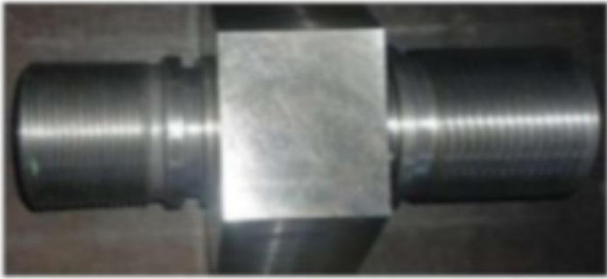


SAMPLE OF PRODUCT



Plunger Tip

SAMPLE OF PRODUCT



Joint Tip



Pipa Spray

SAMPLE OF PRODUCT



**Power Plant
Component**

SAMPLE OF PRODUCT

Minimarket Display Properties



Push Trolley



Rack Display



Display Promotion



**Double Hook 300
mm Diam 6 mm**



Frame Display

SAMPLE OF PRODUCT

Minimarket Display Properties



Basket



Stacking Rack

SAMPLE OF PRODUCT



**Street Lighting Pole
(Tiang PJU)**



Coupling



Niple Brass



Go No Go

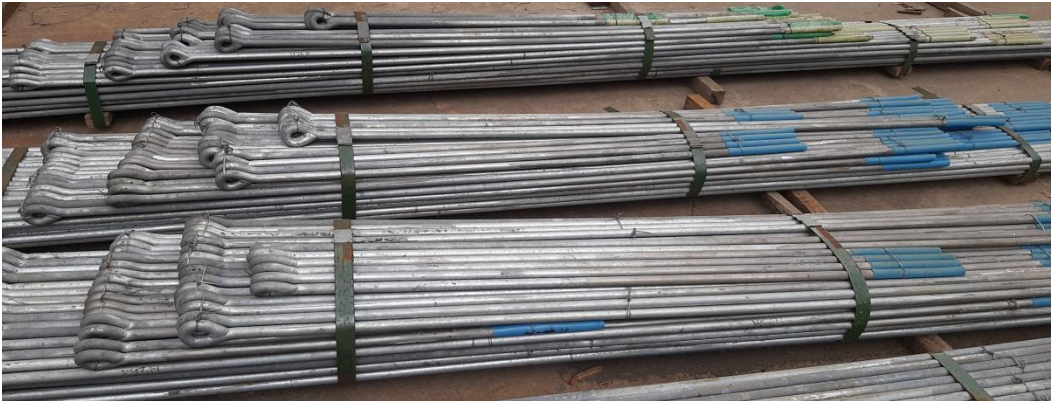
SAMPLE OF PRODUCT SUSPENSION BRIDGE COMPONENT



Suspension Bridge Component



Roller

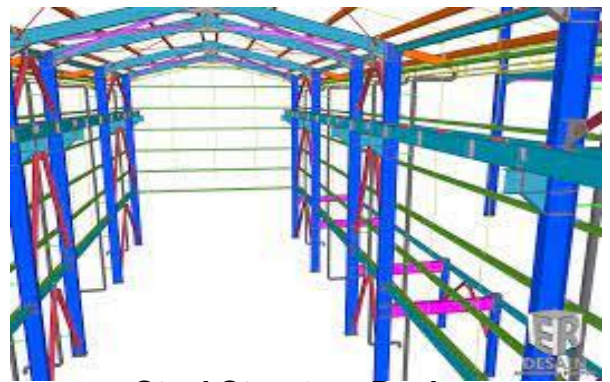


Hanger



ABS Angkur Utama

STEEL STRUCTURE ACTIVITY



Steel Structure Design

Building Steel Structure & Erection

FABRICATION ACTIVITY



Fabrication Process

BUILDING MAINTENANCE ACTIVITY



Making Furniture / Interior Service For Receptionist



Painting with Rope Access For High Level Building



Paving Block Installation

SAMPLE OF PRODUCT ELECTRICITY PARTS

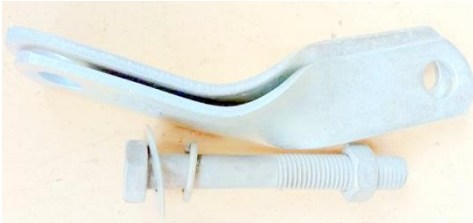


High Voltage Electricity Part



Clevis Tail Dead End

Strain Clamp 300 KVA



Twisted Cross Arm

SAMPLE OF PRODUCT ELECTRICITY PARTS



Roll by Block



Spacer Cable



Pole Band Clamp



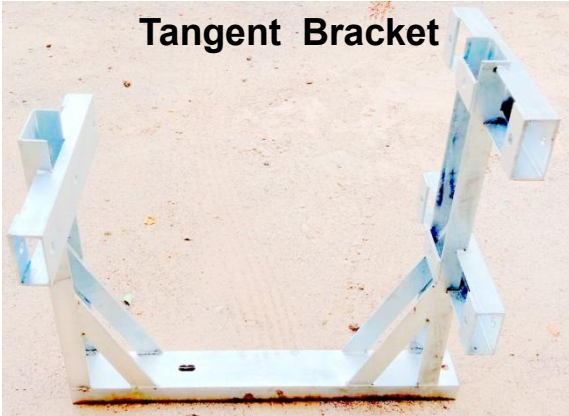
Post Railing



Angle Bracket



Tangent Bracket



THE PROJECT



OUR VALUABLE CUSTOMER

- PT Astra Otoparts Div Nusa Metal
- Cikarang Listrindo, PT
- Mitsuyoshi Manufacturing, PT
- Pervetty Van Melle, PT
- Inti Pantja Press Industry, PT
- Saga Trade Murni, PT
- Arnelindo Atbay, PT
- Dharma Polimetal, PT
- PINDAD (Persero), PT
- INARA, PT
- Lotte Indonesia, PT
- Alexindo, PT
- Amarta Karya, PT
- Pindad Enjiniring Indonesia, PT
- Chuhatsu Indonesia, PT
- Bakrie Pipe Industries, PT
- Asalta Mandiri Agung, PT
- Darmex Oil, PT
- Modern Widya Technical, PT
- Karya Bahana Unigam, PT
- Sanwa Press Work, PT
- Ganamas Prima, PT
- Antariksa Inti, PT
- Maleo Lestari, CV
- Tokoton Meiwa Indonesia, PT
- Salam Pacific International Logistik, PT
- Pratama Mitra Sejati, PT
- Mitra Karya Indonesia, PT
- ETC